

Okay, I know this will be confusing and you may get frustrated, but hang in there, you can do it! I'm going to try and explain this as plain as I can, if you still don't understand when I'm done. Don't give up, call, email, ask for help! Please realize we need EVERYONE to comment on these two rulings. It will affect each and every one of you sooner or later, even if you are not in the expansion area. Wolves don't understand boundaries and if they do travel into your area and you are NOT in the expansion area (under the 10j rule, see definition below), you have very limited tools to use to address the problems they will cause on your operations!

There are TWO current proposals we need you to comment on. The first will be fairly easy, the second a little more difficult. They are both tied to each other. So you can be blunt and quick with the first one, but the second you need to be a little more detailed. Click on the links and on the right side click on comments to either comment directly or upload your comments. If you plan on coming to the Open meeting on November 20 at the Embassy Suites in ABQ, you can read and turn them in then if you would like.

1. **Removing the Gray Wolf (*Canis lupus*) from the List of Endangered and Threatened Wildlife and Maintaining Protections for the Mexican Wolf (*Canis lupus baileyi*) by Listing It as Endangered.** <http://www.regulations.gov/#!documentDetail;D=FWS-HQ-ES-2013-0073-30560>

So this is the proposal to delist wolves across the board all over the U.S. Put the management of them back in the State's hands! We want this! We want this for all of them, even the Mexican wolves. In a nut shell, they want to delist all but the Mexican wolves. So your comments should address this, but also how it is affecting you if you NOW live in that area. You want to be for Delisting all wolves PERIOD! State that!

2. **Proposed Revision to the Nonessential Experimental Population of the Mexican Wolf.**
<http://www.regulations.gov/#!documentDetail;D=FWS-R2-ES-2013-0056-2892>

The second will be a little more detailed and a little more complicated. I'm not going to go into a lot of detail of something's because it is more difficult to understand, just know that there is a lot more to it!

- a. First they want to start doing direct releases of wolves into NM, while they have been doing this, the wolves they released were the problem wolves they picked up. They want to be able to do any wolf.

- b.** Second the proposal is to let wolves roam out of the Blue Range recovery area into the full Mexican wolf recovery area. Before if they roamed out, they would pick them up (Sort of). (See the maps below of what the want to do now and what they envision in the future) – They want to **“modify existing regulations governing the nonessential experimental population to allow captive raised wolves to be released throughout the Blue Range Wolf Recovery Area in the Apache and Gila National Forests east central Arizona and west central New Mexico, and to disperse into the Mexican Wolf Experimental Population Area in the areas of Arizona and New Mexico located between I 40 and I 10.”**

So a few things you should know about your comments:

If you post “realize they will post your entire comment—including your personal identifying information—on <http://www.regulations.gov>. If you provide personal identifying information, such as your street address, phone number, or email address, you may request at the top of your document that They withhold this information from public review. However, THEY cannot guarantee that we will be able to do so.” SO, if you don’t want it publicized don’t put it in! Maybe just put a region, local town, etc.

Please note “that submissions merely stating support for or opposition to the actions under consideration without providing supporting information, although noted, **will not be considered in making a determination.**” SO, Go into detail about how it will affect you and your operation and **ASK** them how they will **MITIGATE** these problems. Remember you commenting gives you the ability to file a lawsuit or sign on to one if it comes to that. If you don’t participate from the beginning (this is the new beginning) you aren’t able to complain!

THEY “intend that any final actions resulting from the proposed rules will be based on the best scientific and commercial data available and be as accurate and as effective as possible.”

COMMENTS:

This is what YOU should include in your comments in no certain order. We want you to describe in detail HOW exactly Wolves on your operation will affect it. Remember these wolves have no fear of humans, they have been pen raised and fed Zoo logs (which by the way consist of Horse meat) and after release will continue to feed them these and road kill to supplement their diets until they learn how to hunt and survive.

Your starting paragraph should state who you are and what you do and if you are in support or opposition to the proposal. Just note, they don't care if you are for or against, but state it and then give your reasons why! Which should include the following:

How they (meaning wolves) will **DIRECTLY** affect your operation if they showed up.

How they will affect your livestock operation?

How will they affect your farming operation?

How will they affect your registered herd?

How they will affect your genetics your breeding program?

How will they affect your children (Family)? They are finding that kids who live in the current area are suffering from all kinds of fears.

How will it affect your community?

How will it affect the economics of your business?

How will it affect wildlife on your place? If you also have a hunting operation, how will it affect that? Depredation?

How will they affect your pets? This needs to be addressed in detail, currently the 10J rule does not allow you to kill a wolf if it is attacking a pet dog or cat. You need to tell them this needs to be changed. Many of you have working dogs that you not only use as a tool to help on your operations, but are like kids to many people!

And while you are doing this. Ask them point blank, how they will **MITIGATE** these affects? They **MUST** answer how they will do this, according to the law. But don't count on it! It at least sets precedence and allows you to pursue lawsuits if needed!

Remember, they don't want emotions or opinions. They want direct solutions, unforeseen problems etc. So be concise and to the point. And again, Directly ask how they will fix it when and if it happens!

Also, be aware that the Department of Game and Fish will tell you that there is no good food source as far as game outside the Gila to support wolves! This leaves very little for them to prey on, other than your livestock and pets! Remember wolves are opportunistic predators. When they are hungry they will eat, they don't care what it is. They will try to tell you they will only prey on the weak and sick. That is not true, they will prey on whatever they can catch and eat. Most don't kill the animal immediately; they mostly

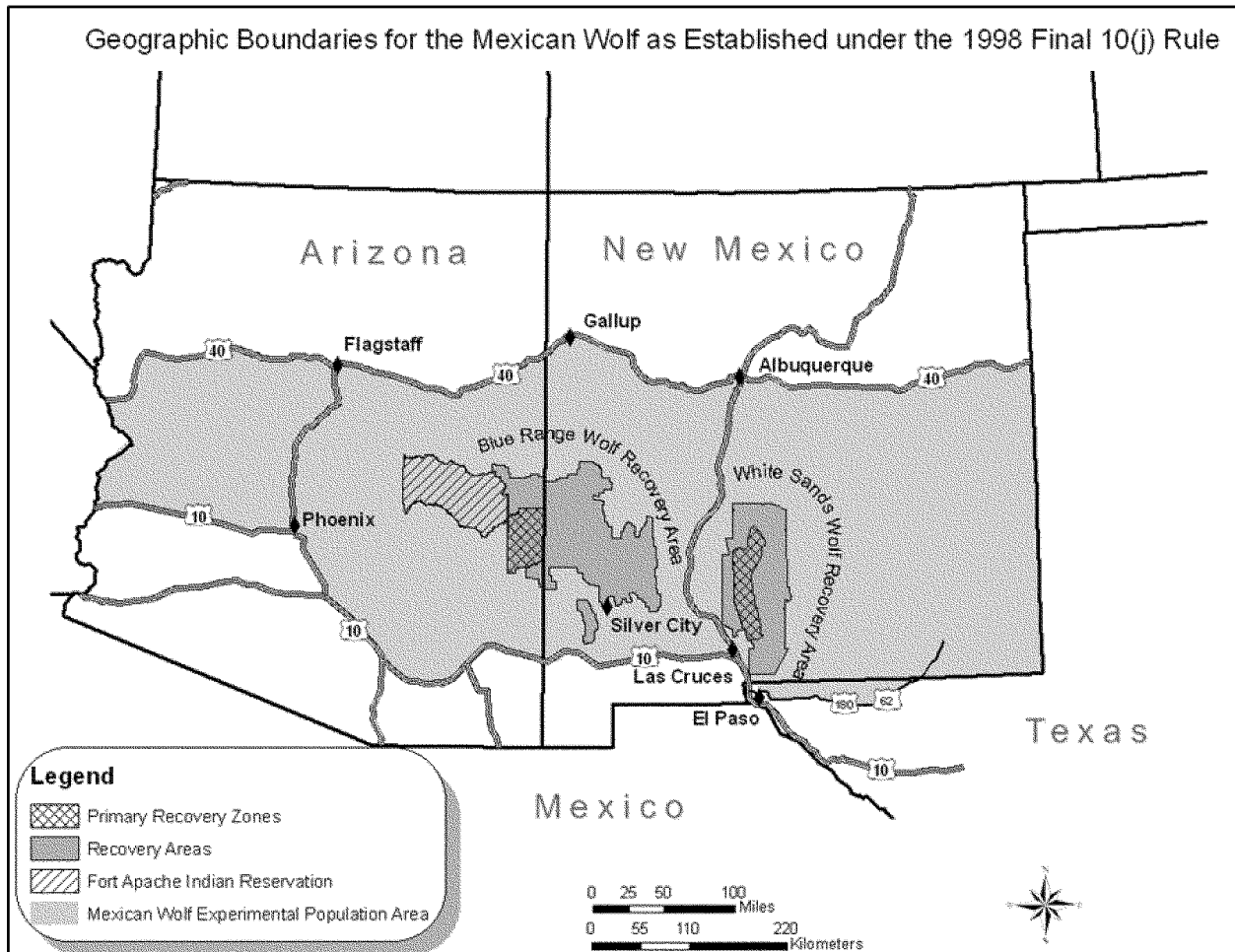
take down an animal by hamstringing them. Then they will start to eat them before they are even dead. Most animals die from shock while being consumed.

Once you have written all this up, go to the links above and either copy and paste your comments or upload the document. Remember, they will publish it for all to see! So don't put anything on there you don't want to make public!

What is the 10(j) Rule?

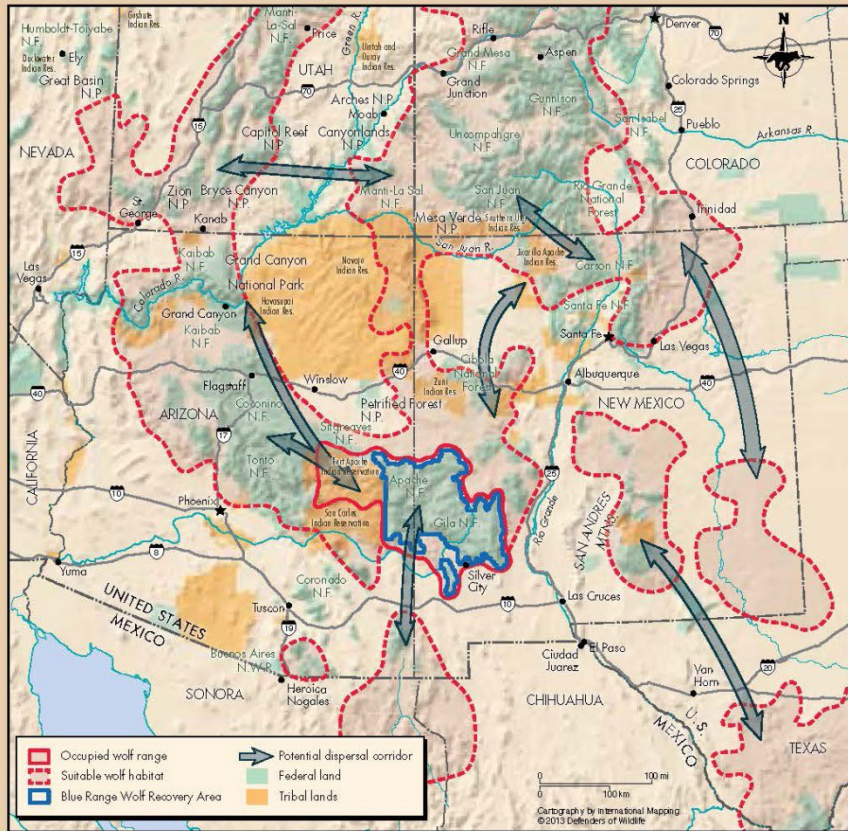
Subsection (j) in Section 10 of the Endangered Species Act permits reintroduction of an endangered species to a location where it used to live, but has since been driven out or exterminated. For each reintroduction effort, a special rule, called a "10(j) rule," is written, which determines whether the population is essential to the survival of the species and specifically describes how the species will be treated by agency staff, whether lethal control can ever be used on the species, and what private citizens can or cannot do in regard to the species. Reintroduced species are managed differently than other endangered species. Federal agencies have more control over these reintroduced populations, which they call "experimental populations," than they do for endangered populations that have not been reintroduced. The Fish and Wildlife Service considers these populations to be supplementary to the core population of the species; a designation which gives FWS more flexibility in managing the species because they do not have to abide by regular ESA standards. Experimental populations are treated under the ESA as threatened species unless designated "nonessential" to the continued existence of the species, a designation that allows FWS to manage the species as though it were a candidate for listing. Unlike the protection accorded other threatened or endangered species, federal agencies are not required to consult with FWS to insure that their actions are not likely to jeopardize members of a nonessential experimental population, unless the population is located on a national wildlife refuge or national park

Figure 1—Geographic Boundaries for the Mexican Wolf under the 1998 Final Section 10(j) Rule.



This is what the Environmentalist want as far as wolves in the SouthWest!

Suitable Wolf Habitat and Potential Dispersal Corridors in the Southwest



Defenders advocates the restoration of Mexican Gray wolf populations in appropriate suitable habitat throughout their historical range in the Southwest at densities sufficient to ensure the long-term survival of wolves and maintenance of the critical role they play in the ecosystem.

In addition to the area where Mexican gray wolves are now present (solid red lines on map), suitable habitat (dashed red lines) exists for Mexican gray wolves in the Grand Canyon region of Arizona, the Sky Islands areas of southern Arizona, New Mexico and northern Mexico and in southern Colorado and Utah and western Texas. (Gray arrows indicate potential dispersal corridors)

Note: The suitable habitat for wolves designated on the map is an approximation based on peer-reviewed studies, expert opinion of our staff and habitat modeling, a complex science that involves superimposing multiple factors such as wolf range and dispersal routes, road density and usage, vegetation types, prey density, presence of livestock, development, slope and elevation.